

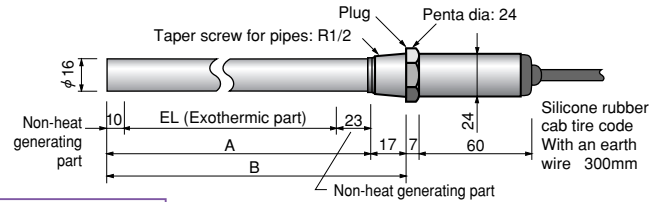
# Ultra W800 / Ultra W

## Ultra W800 (cartridge heater for water)

Cartridge heaters for water use in small size and high capacity. It's sheath material is super-alloy of high nickel, anti corrosion and anti heat.



Heater sheath: NCF800 (Incoroy 800)  
 Heater surface capacity density: 20 W/cm<sup>2</sup>  
 Plug: SUS304L (stainless steel)  
 Terminal part: Silicone rubber mould (with a SUS protection pipe)  
 Power-supply electric wire: Silicone rubber cab tire code 300mm

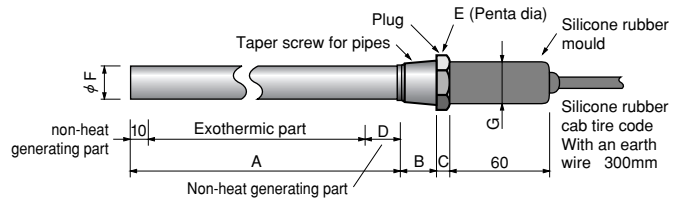


### Prompt delivery

Type	Products code	Volts Max	Maximum Watts	Size (mm)	
				A	EL
SLW4210	03550010	3-phase 220V	1kW	133	100
SLW4215	03550015		1.5kW	183	150
SLW4225	03550025		2.5kW	283	250
SLW4230	03550030		3kW	333	300
SLW4250	03550050		5kW	533	500

## Ultra W (cartridge heater for water)

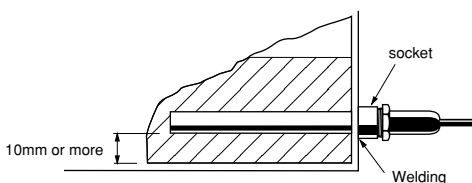
The standard type cartridge heater for water



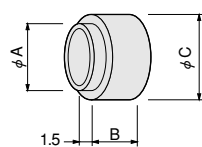
### Prompt delivery

Type	Part number	Products code	phase	Volts Max	Maximum Watts	Taper screw for pipes	Size (mm)							
							A	B	C	D	E	F	G	
<b>Copper sheath type</b> Heater sheath: C1220T(Copper pipe)/nickel plating Plug: Brass nickel plating Heater surface capacity density: 15W/cm <sup>2</sup>	SLW1052	03734010	Single phase	110V	500W	R 3/8	120	16	6	20	21	12	20	
	SLW1103	03734020			1kW	R 1/2	170	20	7	25	24	16	24	
	SLW1154	03734030			1.5kW	R 3/4	195	20	7	25	30	20	28	
	SLW2052	03734040		220V	500W	R 3/8	120	16	6	20	21	12	20	
	SLW2103	03734050			1kW	R 1/2	170	20	7	25	24	16	24	
	SLW2154	03734060			1.5kW	R 3/4	195	20	7	25	30	20	28	
	SLW2204	03734070			2kW	R 3/4	250	20	7	25	30	20	28	
	SLW2304	03734080			3kW	R 3/4	355	20	7	25	30	20	28	
	SLW3103	03734090			3-phase	1kW	R 1/2	175	20	7	25	24	16	24
	SLW3154	03734100				1.5kW	R 3/4	200	20	7	25	30	20	28
SLW3204	03734110	2kW	R 3/4	255		20	7	25	30	20	28			
SLW3304	03734120	3kW	R 3/4	360		20	7	25	30	20	28			
<b>Stainless steel sheath type</b> Plug: SUS304 electrolysis (stainless steel) polish / Plug: SUS304 electrolysis (stainless steel) polish / Heater surface capacity density: 7 W/cm <sup>2</sup>	SLW6052	03734210	Single phase	110V	500W	R 3/8	220	16	6	20	21	12	20	
	SLW6103	03734220			1kW	R 1/2	320	20	7	25	24	16	24	
	SLW6154	03734230			1.5kW	R 3/4	380	20	7	25	30	20	28	
	SLW7052	03734240		220V	500W	R 3/8	220	16	6	20	21	12	20	
	SLW7103	03734250			1kW	R 1/2	320	20	7	25	24	16	24	
	SLW7154	03734260			1.5kW	R 3/4	380	20	7	25	30	20	28	
	SLW7204	03734270			2kW	R 3/4	490	20	7	25	30	20	28	
	SLW8103	03734280			3-phase	1kW	R 1/2	330	20	7	25	24	16	24
	SLW8154	03734290				1.5kW	R 3/4	390	20	7	25	30	20	28
	SLW8204	03734300				2kW	R 3/4	500	20	7	25	30	20	28

### How to fix with Ultra W



The socket for attachment (SUS304)



material: SUS304

Type	Products code	screw diameter for pipes	Size (mm)		
			A	B	C
ZCS0211	03440015	R 3/8	19	12	22
ZCS0212	03440025	R 1/2	24	15	27
ZCS0213	03440035	R 3/4	30	17	33

### In order to use "Ultra W" correctly

- Be careful not to expose a heater sheath into the air. When it is used in the air, a heater sheath may become high temperature and may cause a fire and disconnection.
- If it is used for a long period of time, the substances of scale, carbide - and others will become adhesive deposition on the surface of a heater sheath. Since it prevents from heat radiation and becomes the cause of disconnection or corrosion, please check it constantly and remove those adhesives.
- Please do not use it except for heating of water.