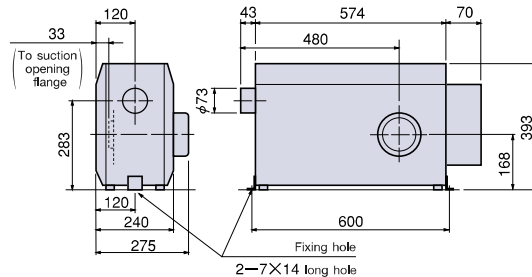


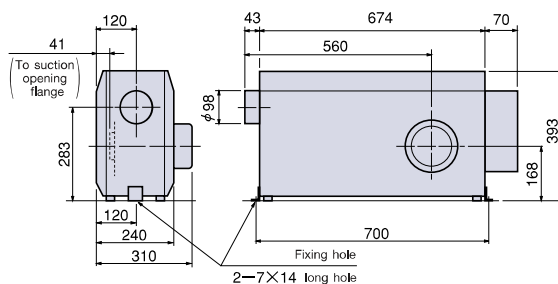
New Controller
Series HAP2000F

New series equipped with inverters. Airflow volume can be adjusted by setting frequency at the controller.

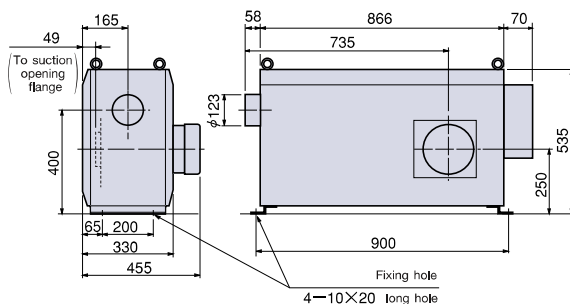
HAP2031F / HAP2051F / HAP2076F (Three-phase 200V 3kW/5kW/7.5kW)



HAP2081F / HAP2101F (Three-phase 200V 8kW/10kW)



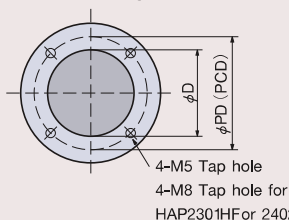
HAP2151HF / HAP2201HF (Three-phase 200V 15kW/20kW)



Suction opening



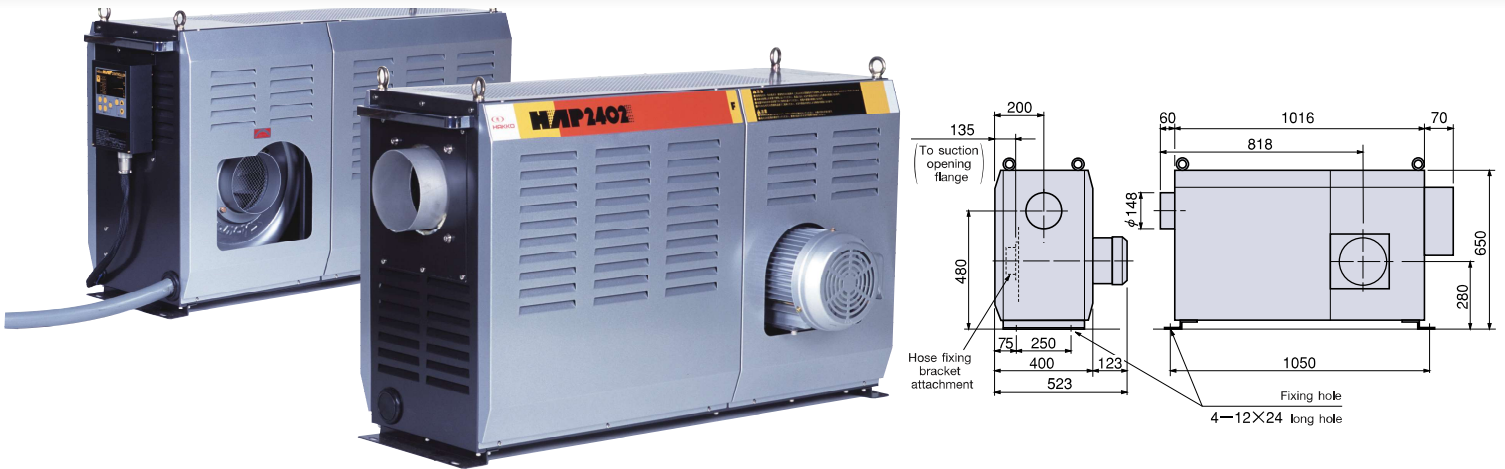
Suction opening size



Model No.	φ D	φ PD
HAP2031F • 2051F • 2076F	75	96
HAP2081F • 2101F	100	120
HAP2151HF • 2201HF	125	140
HAP2301HF • 2402HF	150	180

The suction opening is positioned opposite to the blast motor in all models.

HAP2301HF/HAP2402HF (Three-phase 200V 30kW/40kW)



HAP2000F Series					Quick-delivery product
Model No.	HAP2031F	HAP2051F	HAP2076F	HAP2081F	HAP2101F
Product code	00700211	00700221	00700231	00700241	00700251
Power source	Three-phase 200 V				
Total capacity	3.2 kW	5.2 kW	7.7 kW	8.3 kW	10.3 kW
Heater capacity	3 kW	5 kW	7.5 kW	8 kW	10 kW
Gas temperature range at discharge opening	Normal temperature ~ 350°C*				
Airflow volume range (30 Hz~60 Hz)	2.3 m³/min ~ 4.8 m³/min			3.7 m³/min ~ 7.8 m³/min	
Airflow volume adjustment	Based on the revolution speed change by inverter				
Inverter output frequency range	30 Hz ~ 60 Hz				
Suction opening diameter	φ 75 mm hole			φ 100 mm hole	
Discharge opening diameter	φ 73 mm stainless steel pipe			φ 98 mm stainless steel pipe	
Suction air temperature	-10°C ~ 230°C				
Specifications of hot air generator	Maximum airflow volume (60 Hz)	6.2 m³/min			10.4 m³/min
	Maximum static pressure (60 Hz)	0.91 kPa			1.35 kPa
	Capacity	Three-phase 200 V 0.15 kW			Three-phase 200 V 0.3 kW
	Maximum noise (60 Hz)	59 dB			66 dB
Power supply - Electrical cable	VCT 4 cores × 3.5 mm² × 3 m		VCT 4 cores × 5.5 mm² × 3 m	VCT 4 cores × 5.5 mm² × 3 m	VCT 4 cores × 8 mm² × 3 m
Weight	28 kg			34 kg	35 kg

Model No.	HAP2151HF	HAP2201HF	HAP2301HF	HAP2402HF	
Product code	00700263	00700273	00700285	00700297	
Power source	Three-phase 200 V				
Total capacity	16.5 kW	21.5 kW	31.5 kW	41.5 kW	
Heater capacity	15 kW	20 kW	30 kW	40 kW	
Gas temperature range at discharge opening	Normal temperature ~ 350°C*				
Airflow volume range (30 Hz~60 Hz)	7.7 m³/min ~ 15.5 m³/min		12 m³/min ~ 25 m³/min		
Airflow volume adjustment	Based on the revolution speed change by inverter				
Inverter output frequency range	30 Hz ~ 60 Hz				
Suction opening diameter	φ 125 mm hole		φ 148 mm pipe		
Discharge opening diameter	φ 123 mm stainless steel pipe		φ 148 mm stainless steel pipe		
Suction air temperature	-10°C ~ 230°C				
Specifications of hot air generator	Maximum airflow volume (60 Hz)	24.0 m³/min		34 m³/min	
	Maximum static pressure (60 Hz)	2.37 kPa		2.8 kPa	
	Capacity	Three-phase 200 V 1.5 kW			
	Maximum noise (60 Hz)	90 dB		90 dB	
Power supply - Electrical cable	VCT 4 cores × 14 mm² × 3 m	VCT 4 cores × 22 mm² × 3 m	VCT 4 cores × 38 mm² × 3 m		
Weight	74 kg	77 kg	114 kg	121 kg	

*Gas temperature varies depending on the conditions of use. The product should not be used higher than the maximum temperature.